



# Asset-Trade

Assessment & Sale of Used Assets

Ref. No.: 620-05111654

## Overview and Technical Data:

**LEIFELD - SC 310 CNC Metal Spinning Machinery**

**LEIFELD**



**LEIFELD**

Year of Build: Jan 2010



## Description:

### Used LEIDFELD SC 310 Metal spinning Machine

Operating hrs ca 6.250

#### Specification

- Blank diameter, max. 1,000 mm
- Center distance 1,200 mm
- Rest path, lengthwise 500 mm
- Rest path, across 300 mm
- Rest force, lengthwise 30 kN
- Rest force, across 30 kN
- Ejector stroke 300 mm
- Tailstock spindle stroke 450 mm
- Rotational speed, continuously adjustable 250 – 2,500 min-1
- Spindle DIN 55027, size 8

Programmable & electrically adjustable units, such as:

- Circle centering device
- Peeler
- Processing device BAE/I, BAE/II

Machine configuration or additional equipment

- Circle brace
- Sextuple tool turret
- Lubricant spraying unit
- Roll support with compensation
- Air conditioning for switch cabinet

Required space - Length: 4,300 mm x Width: 2,300 mm x Height: 2,700 mm

---

### Powerful Spinning Center

Leifeld has consistently advanced and perfected its spinning technology and has incorporated the results into innovative machine concepts. The current SC series of Leifeld spinning machines operate via playback CNC-control and are a competitive alternative to



# Asset-Trade

Assessment & Sale of Used Assets

established processes such as deep drawing. Machine efficiency is among the most outstanding features: combinable manufacturing potential, low tooling costs, fast manufacturing processes and a high product range increase considerably the degree of utilization.



## Technical Data:

### Technical Data:

Control: CNC  
Machine Hours: 6250

### Dimensions and Weight:

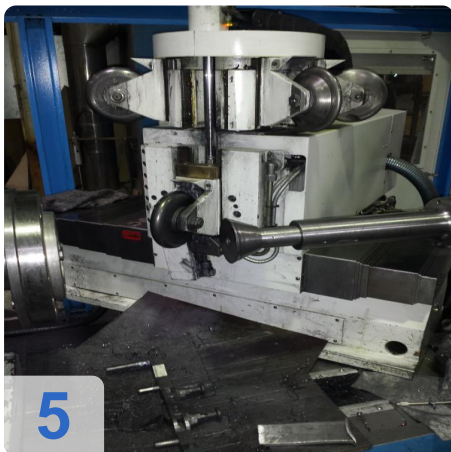
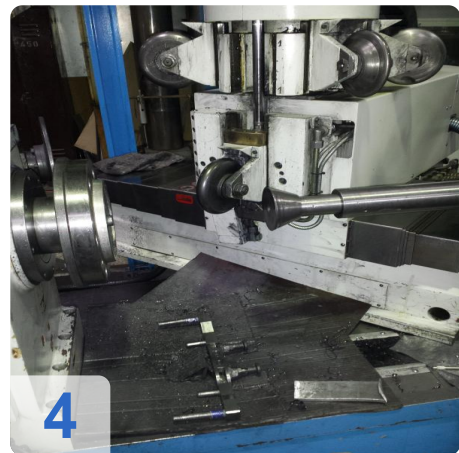
Height: 2.700 mm  
Length: 4.300 mm  
Width: 2.300 mm  
Weight: 9.000 kg

### Buyer Information:

Condition: Like New  
Available: Sold  
Sold as:  
EXW (Ex Works - Incoterm)  
VAT: 19 %  
Buyers Premium: 15 %  
Location: Germany



## Images:



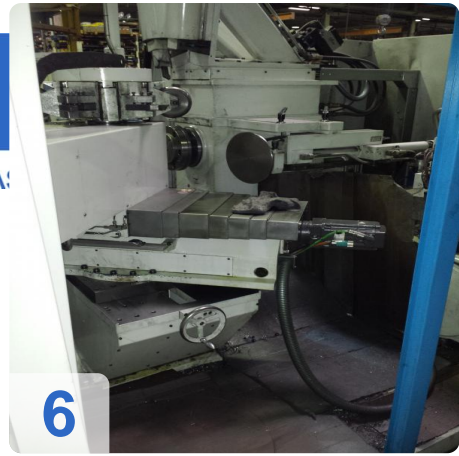




As

e

ssets



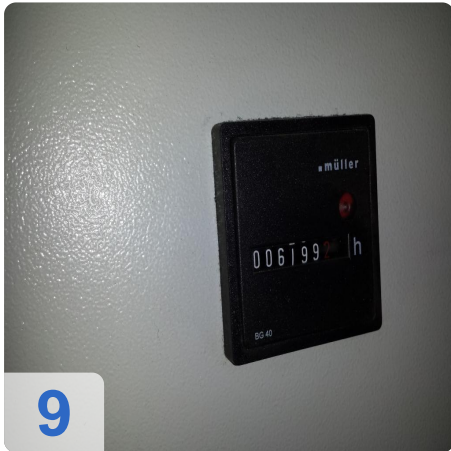
6



7



8



9



10



11



As

e

ssets





# Asset-Trade

Assessment & Sale of Used Assets

Video:







# Asset-Trade

Assessment & Sale of Used Assets

QR Code for <https://www.asset-trade.de/en/print/pdf/node/1800>

**Asset-Trade**

**Assessment and Sale of Used Assets world  
wide**

**Am Sonnenhof 16**

**47800 Krefeld**

**Germany**

**Tel.: +49 2151 32500 33**