



Asset-Trade

Assessment & Sale of Used Assets

Ref. No.: 1411-03181230



Overview and Technical Data:

WINDSOR W1000 Injection moulding Machine
1000 Ton

WINDSOR

WINDSOR
TECHNOLOGIES

Year of Build: Jan 1985



Description:

Used Klöckner Windsor W1000 -86 injection moulding machine for sale

CNC Controls Siemens S5 150U

Wittmann Handling

Technical data:

- Clamping unit
 - Clamping force: 10000 kN
 - Opening stroke: 1488 mm
 - Distance between bars: 1190x1190 mm
 - Mould height min: 500 mm
 - Mould height max: 4054 g
- Injection Unit
 - Screw diameter: >115 mm
 - Stroke Volumn: 4770 CM³
 - Injection pressure: 1800 bar
- Weights:
 - Clamping unit: 63 tons
 - injection unit: 27tons
 - Total: 90 tons
- Dimentions: 12,5 x 3 x 3,5m

This Windsor W1000 Injection Moulding Machine was manufactured in 1985 in Germany. This machine can operate with a clamping force of 10000 kN and an injection pressure of 1800 bar. Must be noted that there is a complete, functioning card set including installation frame of the same machine.



Technical Data:

Technical Data:

Control: SIEMENS

Buyer Information:

Condition: Normal wear

Available: Immediately

Sold as:

EXW (Ex Works - Incoterm)

VAT: 19 %

Buyers Premium: 18 %

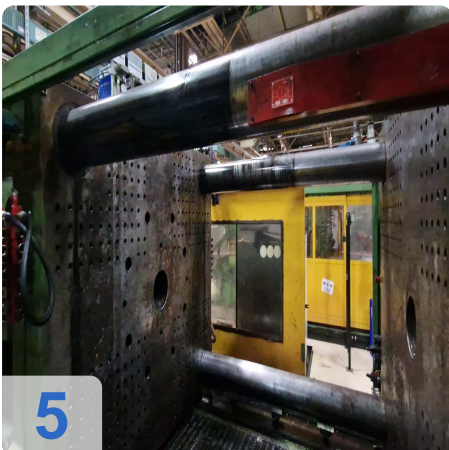
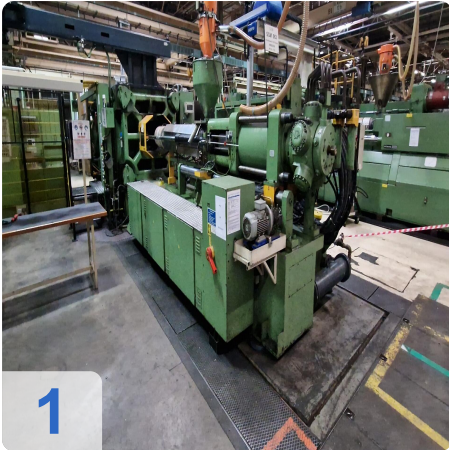
Location: Germany



Asset-Trade

Assessment & Sale of Used Assets

Images:

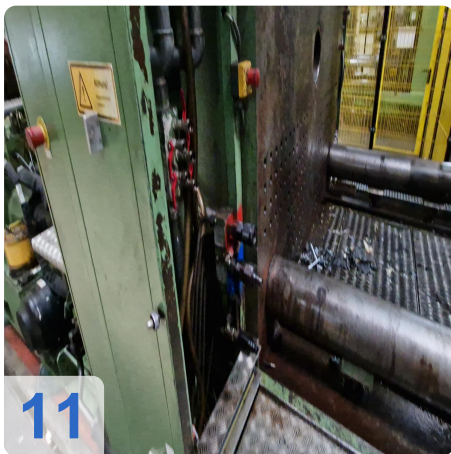
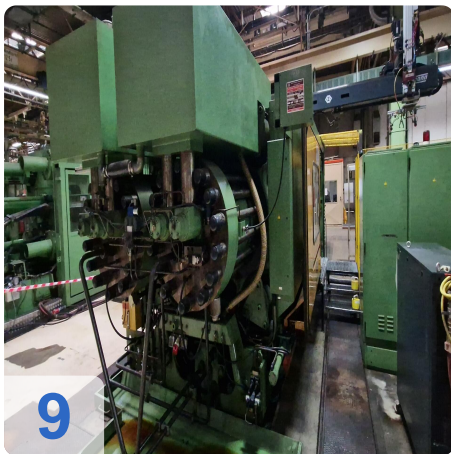
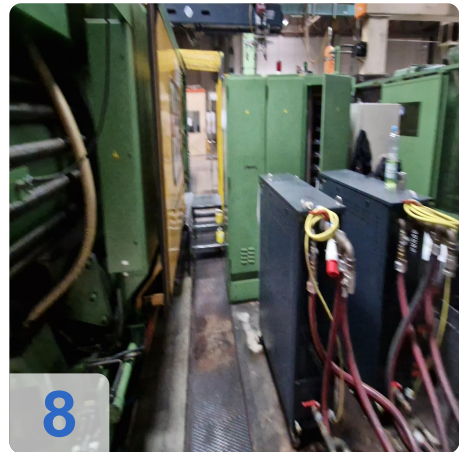




As

e

assets

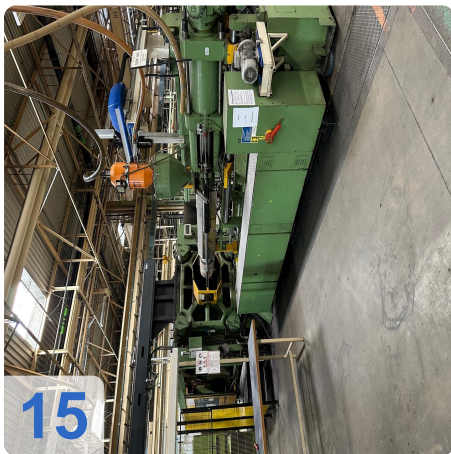
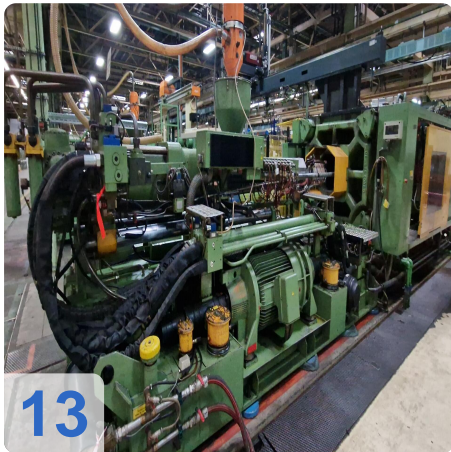
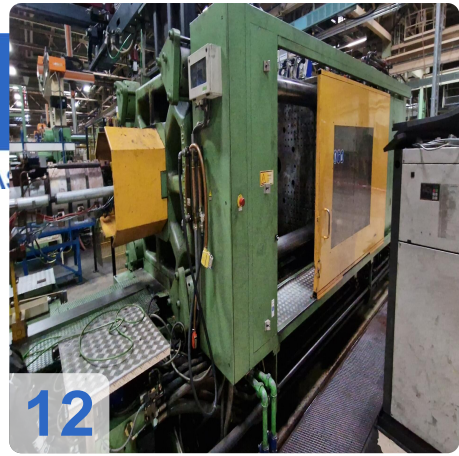




Asset-Trade

e

Assets



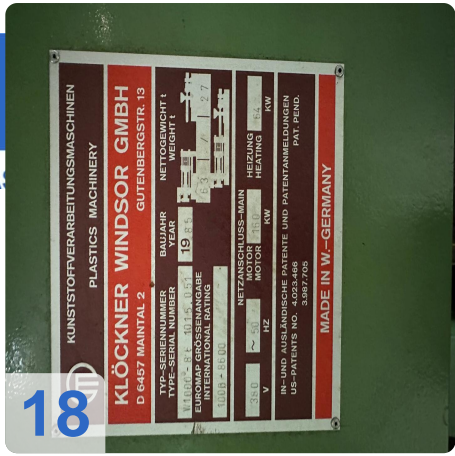


Asset-Trade

e

Assets

18





Asset-Trade

Assessment & Sale of Used Assets

QR Code for <https://www.asset-trade.de/en/print/pdf/node/7377>

Asset-Trade

**Assessment and Sale of Used Assets world
wide**

Am Sonnenhof 16

47800 Krefeld

Germany

Tel.: +49 2151 32500 33