

HERM BHKW Kompaktmodule Moderne Energie

Ref. No.: F343-25101300

Overview and Technical Data:

SOKRATHERM GG 140 S - combined heat & power plant 142kW

SOKRATHERM

SOKRA[®]
therm

Year of Build: Oct 2011
Blockheizkraftwerke



Description:

Used SOKRATHERM GG 140 SoE - Gas Combined heat & power unit 142kW

The natural gas-fueled cogeneration unit has a thermal output of 216 kW and an electrical output of 142 kW for the power supply, and is ideally suited to compensate for the constantly rising energy prices through self-generation. The CHP unit works on the principle of cogeneration, which means that in addition to electricity, heat can also be generated.

Stand 17.12.2021

- 60502 Bh
- 3768 Starts

Technical data

- Gross active power: 199 kW
- Net active power: 142 kW
- Apparent power: 177,5 kVA
- Rated voltage: 400 V
- Rated current: 257 A
- Electrical efficiency: 36,2
- Thermal power: 216 kW
- Thermal efficiency: 55,1
- Total efficiency: 91, 3%
- Gas consumption: 392 kW H
- Electric power factor: 0,64
- Primary energy factor: 0,194
- Maintenance interval: 1.500 operating hours
- Major overhaul: 50,000 after approx. [Bh]
- Airborne sound pressure level: 69 dB

Generator:

- Manufacturer: MarelliGenerators
- Model: MJB 250 LB4

CHP - combined heat and power plants



Combined heat and power plants or industrial plants that produce thermal energy and cogeneration, using a combustion engine to produce both electricity and heat. Especially in times when productivity and economic security are becoming increasingly important, CHP can contribute to environmental protection and at the same time reduce personnel costs. The operation of cogeneration is very efficient, as the combination of electricity generation and heat production can be up to 95% efficient. This is possible by using the heat generated during electricity production for heating purposes, which means that practically nothing is lost in terms of heat and energy. CHP is not only environmentally friendly, but can also reduce electricity bills, as self-produced electricity is often cheaper than the alternative grid.



Technical Data:

Technical Data:

Control: CNC
Machine Hours: 3768

Dimensions and Weight:

Height: 1.830 mm
Length: 2.500 mm
Width: 900 mm
Weight: 2.850 kg

Buyer Information:

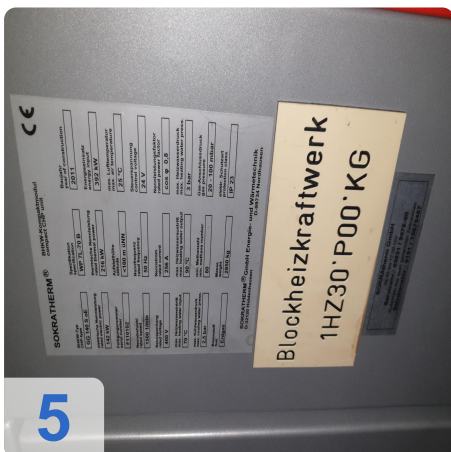
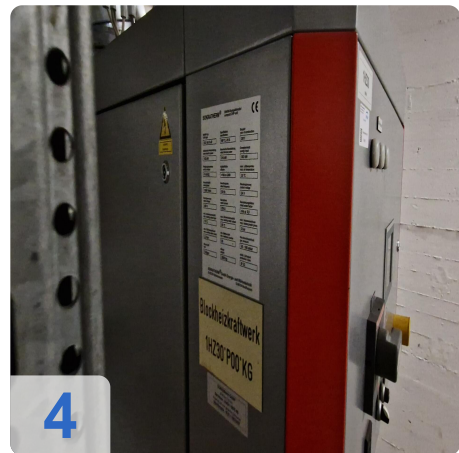
Condition: Very good condition
Available: Immediately
Sold as:
EXW (Ex Works - Incoterm)
VAT: 19 %
Buyers Premium: 16 %
Location: Germany



Asset-Trade

Assessment & Sale of Used Assets

Images:





Asset-Trade

Assessment & Sale of Used Assets

Video:





Asset-Trade

Assessment & Sale of Used Assets

QR Code for <https://www.asset-trade.de/en/print/pdf/node/7317>

Asset-Trade

**Assessment and Sale of Used Assets world
wide**

Am Sonnenhof 16

47800 Krefeld

Germany

Tel.: +49 2151 32500 33